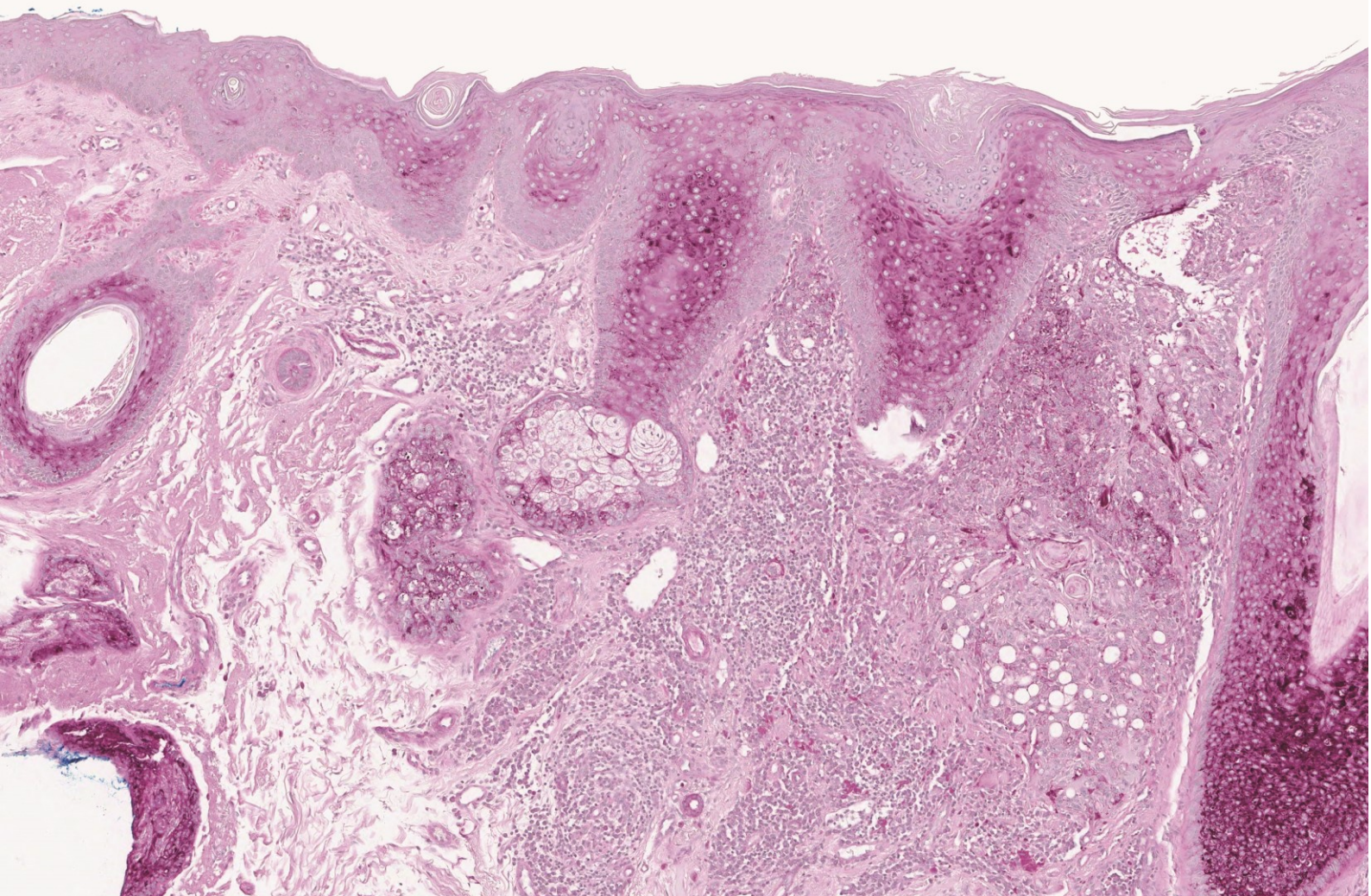


**Pathology  
Histology  
Cytology  
Chemicals**

**TEKKiM**  
A delicate touch to Chemicals





# Pathology

The chemicals used during pathology diagnosis should be of high purity and accuracy.

As Tekkim brand, therefore we attach great importance to human health and pathology. We know the importance of identification and follow-up for human health and in this respect we are producing chemicals in high purity and accuracy for use in all stages. Pathology is a branch of medical science primarily concerning the cause, origin and nature of disease. It involves the examination of tissues, organs, bodily fluids and autopsies in order to study and diagnose disease. In this sense, pathology is the basis of medicine

Pathology; knowledge learned in anatomy and physiology provides an easier understanding of diseases by adding diseased organs to the naked eye or under the microscope the abnormal appearance. Appearance in areas where very helpful to decide the contribution to the determination of the diagnosis and appropriate treatment of the pathological examination is very large. Nowadays, pathological examination is necessary and definite for the definite diagnosis of many diseases, especially the diagnosis of tumors.

## ***Routine histopathological applications***

### **Fixation**

Tissues are alive at the time they separated from the human body and the diseases they carry (if any) they exhibit morphological findings. The determination of the moment of appearance of the tissue temperature, humidity, and the change by the action of the enzyme is done in order to avoid distortion. The cells in the tissue after a period determined by the action of digestive enzymes undergo autolysis they contain bacteria and loses its morphological characteristics and state income can not be used in a diagnostic examination. Special liquids are usually used for fixing. Tissues and organs are placed into the detection fluid 10-20 times their volume.

### **Tissue processing**

Almost all subsequent steps can be performed on automatic machines. The first stage is the removal of the detection fluid, which consists mainly of water, and the water it contains at its beginning (dehydration). This helps to harden the tissue. In the later stages of hard tissues it would be possible to cut very thin. TK.200655 Ethanol Absolute Extra pure is a substance that increases the fragility of the tissue. It must also be removed from the media with the help of TK.090270 Xylene Extra pure. The sample containing water at the beginning was TK.200655 Ethanol Absolute Extra pure and TK.090270 Xylene Extra pure liquefied TK.200661 Paraffin Pellets Extra pure infusion is provided by heating to infiltrated intervals. Paraffin Pellets solidifies at room temperature. Samples are enumerated to avoid confusion followed. These numbers appear on cassettes, blocks, preparations and reports where tissues are deposited at all stages after that. Detection operations are performed at room temperature to 60 °C.

### **Blocking**

TK.200661 Paraffin Pellets Extra pure infiltrated tissues are placed in rectangular prism shaped molds and heated. TK.200661 Paraffin Pellets Extra pure material is poured and cooled to obtain blocks. In this way it is possible tissues can be cut very thin.

### **Cutting**

With solid form TK.200661 Paraffin Pellets blocks; it is cut at the desired thickness (usually 4-5 microns) with a device called microtome. The sections are taken from the warm water bath and then left on the slides. These sections are first heated and then deparaffinized with solvent TK.090270 Xylene Extra pure. This paraffin, which become increasingly watery, are then passed through the alcohols and applied to the desired paint.

### **Staining**

Hematoxylin (blue) and Eosin (red) dyes are routinely used. Briefly named "HE" or "H&E". In this way, the cytoplasm are blue, called cytoplasm and the parts surrounding the nucleus are painted red-pink. It is sufficient to evaluate the preparations stained with this method for the definitive diagnosis of most diseases.

# Histology

## FIXATIVES

### Formaldehyde Solution %10 (Stabilized min. %1 Methanol) Extra Pure

Product Code	Package Type
TK.030408.01001	1 lt - plastic bottle
TK.030408.02501	2,5 lt - plastic bottle
TK.030408.05001	5 lt - plastic bottle
TK.030408.20005	20 lt - plastic drum
TK.030408.25005	25 lt - plastic drum

### Formaldehyde Solution %10 Buffered pH:6,8-7,2 (min. %1 Methanol) Extra Pure

Product Code	Package Type
TK.060161.01001	1 lt - plastic bottle
TK.060161.02501	2,5 lt - plastic bottle
TK.060161.05001	5 lt - plastic bottle
TK.060161.20005	20 lt - plastic drum
TK.060161.25005	25 lt - plastic drum

### Formaldehyde - Acetic Acid Solution

Product Code	Package Type
TK.930169.00501	500 ml - plastic bottle
TK.930169.01001	1 lt - plastic bottle
TK.930169.05001	5 lt - plastic bottle

### Formaldehyde - Alcoholic Solution

Product Code	Package Type
TK.930170.00501	500 ml - plastic bottle
TK.930170.01001	1 lt - plastic bottle
TK.930170.05001	5 lt - plastic bottle

### Bouin's Solution

Product Code	Package Type
TK.930171.00501	500 ml - plastic bottle
TK.930171.01001	1 lt - plastic bottle

### Carnoy's Solution

Product Code	Package Type
TK.930172.00501	500 ml - plastic bottle
TK.930172.01001	1 lt - plastic bottle

### Zenker's Solution

Product Code	Package Type
TK.930173.00501	500 ml - plastic bottle
TK.930173.01001	1 lt - plastic bottle

### Zinc Fixative

Product Code	Package Type
TK.930174.00501	500 ml - plastic bottle
TK.930174.01001	1 lt - plastic bottle

## TISSUE PROCESSING REAGENTS

### Ethanol Absolute %99,5 Extra pure

Product Code	Package Type
TK.200655.01000	1 lt - glass bottle
TK.200655.01001	1 lt - plastic bottle
TK.200655.02500	2,5 lt - glass bottle
TK.200655.02501	2,5 lt - plastic bottle
TK.200655.05001	5 lt - plastic bottle
TK.200655.25001	25 lt - plastic drum
TK.200655.25003	25 lt - steel drum

### Ethanol Absolute %99,5 Extra pure

Product Code	Package Type
TK.200655.01000	1 lt - glass bottle
TK.200655.01001	1 lt - plastic bottle
TK.200655.02500	2,5 lt - glass bottle
TK.200655.02501	2,5 lt - plastic bottle
TK.200655.05001	5 lt - plastic bottle
TK.200655.25001	25 lt - plastic drum
TK.200655.25003	25 lt - steel drum

### Ethanol Absolute %99,9 ACS grade

Product Code	Package Type
TK.911015.01000	1 lt - glass bottle
TK.911015.02500	2,5 lt - glass bottle
TK.911015.02501	2,5 lt - plastic bottle
TK.911015.05001	5 lt - plastic bottle

### Acetone Extra pure

Product Code	Package Type
TK.010050.01000	1 lt - glass bottle
TK.010050.01001	1 lt - plastic bottle
TK.010050.02500	2,5 lt - glass bottle
TK.010050.02501	2,5 lt - plastic bottle
TK.010050.05001	5 lt - plastic bottle
TK.010050.25001	25 lt - plastic drum
TK.010050.25003	25 lt - steel drum

### Xylene Extra pure

Product Code	Package Type
TK.090270.01000	1 lt - glass bottle
TK.090270.02500	2,5 lt - glass bottle
TK.090270.05001	5 lt - coex bottle
TK.090270.25001	25 lt - plastic drum
TK.090270.25003	25 lt - steel drum

### Iso Propyl Alcohol (2-Propanol) Extra Pure

Product Code	Package Type
TK.090250.01000	1 lt - glass bottle
TK.090250.01001	1 lt - plastic bottle
TK.090250.02500	2,5 lt - glass bottle
TK.090250.02501	2,5 lt - plastic bottle
TK.090250.05001	5 lt - plastic bottle
TK.090250.25001	25 lt - plastic drum
TK.090250.25003	25 lt - steel drum

### Methanol Extra pure

Product Code	Package Type
TK.120320.01000	1 lt - glass bottle
TK.120320.01001	1 lt - plastic bottle
TK.120320.02500	2,5 lt - glass bottle
TK.120320.02501	2,5 lt - plastic bottle
TK.120320.05001	5 lt - plastic bottle
TK.120320.25001	25 lt - plastic drum
TK.120320.25003	25 lt - steel drum

### Paraffin Pellets Extra pure

Product Code	Package Type
TK.200661.01002	1 kg - plastic bottle
TK.200661.05004	5 kg - plastic bucket
TK.200661.25006	25 kg - plastic in box



## STAINS

### Alcian Blue pH 2,5 solution

Product Code	Package Type
TK.930165.00501	500 ml - plastic bottle
TK.930165.01001	1 lt - plastic bottle

### Eosine yellow Solution % 0,5 in water

Product Code	Package Type
TK.930166.00501	500 ml - plastic bottle
TK.930166.01001	1 lt - plastic bottle

### Eosine yellow Solution % 1 in ethanol

Product Code	Package Type
TK.930167.00501	500 ml - plastic bottle
TK.930167.01001	1 lt - plastic bottle

### Eosine yellow Solution Stock Solution

Product Code	Package Type
TK.930168.00501	500 ml - plastic bottle
TK.930168.01001	1 lt - plastic bottle

### Harris Hematoxylin

Product Code	Package Type
TK.930160.00501	500 ml - plastic bottle
TK.930160.01001	1 lt - plastic bottle

### Mayer Hematoxylin

Product Code	Package Type
TK.930161.00501	500 ml - plastic bottle
TK.930161.01001	1 lt - plastic bottle

### Papanicolaou EA-50

Product Code	Package Type
TK.930162.00501	500 ml - plastic bottle
TK.930162.01001	1 lt - plastic bottle

### Papanicolaou EA-65

Product Code	Package Type
TK.930163.00501	500 ml - plastic bottle
TK.930163.01001	1 lt - plastic bottle

### Papanicolaou OG-6

Product Code	Package Type
TK.930164.00501	500 ml - plastic bottle
TK.930164.01001	1 lt - plastic bottle

### Sudan III Stain

Product Code	Package Type
TK.400327.00101	100 ml - plastic bottle

### Toluidine Blue solution

Product Code	Package Type
TK.400368.00101	100 ml - plastic bottle

## DECALCIFICATION REAGENTS

### Nitric Acid %65

Product Code	Package Type
TK.130341.01001	1 lt - plastic bottle
TK.130341.02500	2,5 lt - glass bottle
TK.130341.02501	2,5 lt - plastic bottle
TK.130341.05001	5 lt - plastic bottle
TK.130341.25001	25 lt - plastic drum

### Hydrochloric Acid %10

Product Code	Package Type
TK.400152.01001	1 lt - plastic bottle
TK.400152.02500	2,5 lt - glass bottle
TK.400152.02501	2,5 lt - plastic bottle
TK.400152.05001	5 lt - plastic bottle
TK.400152.25001	25 lt - plastic drum

### Hydrochloric Acid %37

Product Code	Package Type
TK.080231.01001	1 lt - plastic bottle
TK.080231.02500	2,5 lt - glass bottle
TK.080231.02501	2,5 lt - plastic bottle
TK.080231.05001	5 lt - plastic bottle
TK.080231.25001	25 lt - plastic drum

### Formic Acid %85

Product Code	Package Type
TK.060170.01001	1 lt - plastic bottle
TK.060170.02501	2,5 lt - plastic bottle
TK.060170.05001	5 lt - plastic bottle
TK.060170.25001	25 lt - plastic drum







# TEKKİM

A delicate touch to Chemicals

TEKKİM KİMYA SANAYİ VE TİCARET LİMİTED ŞİRKETİ

O.S.B. Mavi Cadde. 8.Sokak No:1 NİLÜFER/BURSA

Tel: +90 224 243 21 71 Faks: +90 224 243 97 66

www.tekkim.com.tr tekkim@tekkim.com.tr

